

SELF-ISOLATION

HOW IT WORKS



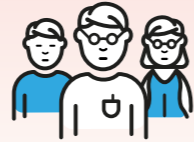
I AM INFECTED WITH COVID-19

SELF-ISOLATION



Go into **self-isolation** immediately, without waiting for the call of the **Contact Tracing**

CONTACT TRACING



The **Contact Tracing team** has been **informed** about your test result

in self-isolation

1

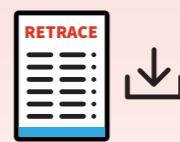


Help us trace and identify people who have had a **high-risk*** contact with you



Notify the people you have been in contact with and direct them to the website: covidtracing.public.lu

2



Download and fill in the form below

Form COVID+

After filling it in correctly, send it to the e-mail address:

declarationcovid@ms.etat.lu

3



People who have had high-risk* contact with you will receive the necessary documents for quarantine, as well as an order for a test to be carried out on the 6th day

Your participation in the tracing will help us to better control the pandemic

Thank you for your help

*High-risk contact: See definition in the form

SELF-QUARANTINE

HOW IT WORKS



I HAD A HIGH-RISK CONTACT

SELF-QUARANTINE



Go into **self-quarantine**

in self-quarantine

1



Download and fill in the form below

Form Contact

After filling it in correctly, send it to the e-mail address:

declarationcovid@ms.etat.lu

2



Please indicate the surname and first name of the person with a positive result, or the reference number of the file if the person has given it to you

3



Only forms that are filled in correctly can be accepted.

Your participation in the tracing will help us to better control the pandemic

Thank you for your help

*High-risk contact: See definition in the form